

Four large diameter wheels allow the stand to be moved. The stand facilitates the accurate positioning of the generator to the support.

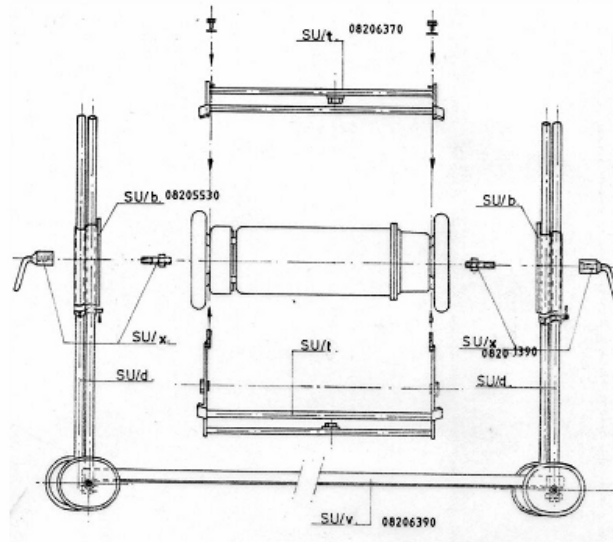
The stand can be assembled to support the generator vertically or horizontally.

Your cradle provides good protection for directional generator against shock and simplifies their handling (positioning, attaching, rope-slings, etc.).



Specifications

Mechanical



Producer

Balteau NDT sa

Voie de Liège, 12
B-4681 Hermalle Sous Argenteau
BELGIUM

Tel.: +32 4 374 75 75

Fax: +32 4 374 75 85

E-mail: balteau@balteau-ndt.com

Website: www.balteau.com

Distributor

All specifications are non contractual and are subject to change without prior notice