



Luminance of 125,000 cd/qm

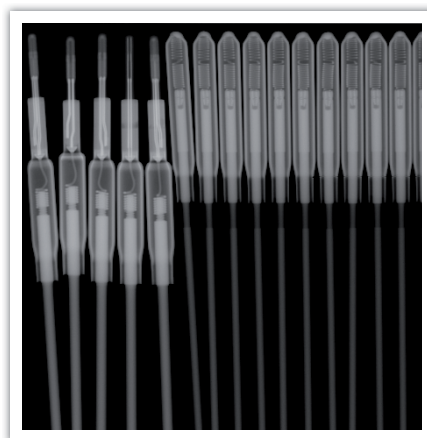
For density up to D= 4.1 in accordance to:

- EN 25580
- ISO 5580
- ASTM E 1390

MISC.

- Housing: Powder coating
- Additional mask for 6 cm wide films
- Continuous brightness control from 5 to 100%

The LED Film Viewer has introduced LED technology to radiography. The efficiency of LED's is much more higher than halogen lamps because they create only 'cold' light without heat radiation. With only low heat to be removed, the fan on the film viewer is now whisper quiet. The high luminance of the LED viewing units requires hundreds of single light sources leading to a uniform light distribution on the screen. With an expected life of more than 40,000 hours, a viewer's light source should last around 20 years if operated 40 hours per week.



CHARACTERISTICS

- Luminance 125,000 cd/qm
- Suitable for large radiographs of castings
- Comfort of use : interpretation easier
- Mask for 6cm wide films
- Specific shape viewing
- Low voltage LED lamps (brighter and higher rendering than conventional bulbs)
- power line cable and foot switch cable

Specifications

Specifications	Units
Dimensions (W x H x D)	mm
Weight	kg
Luminance	Cd/qm
Max opt. density	
Viewing area	mm
Mains	V
Frequency	Hz
Consumption	W
Housing	
Background	

ACCESSORIES **LED Film Viewer**

220 x 185 x 615
10
125,000
4,1
445 x 85
100 - 240
50 - 60
450
Powder coating
Adjustable luminosity to avoid glare

Produced by:

Balteau NDT
Rue Voie de Liège, 12
B-4681 Hermalle Sous Argenteau
Belgium

www.balteau.com
balteau@balteau.com
Tel. +32 (0) 4 374 75 75
Fax +32 (0) 4 374 75 85

Distributed by:

