

BALTOSCOPE MOBI-X 23-100-S



Detector Technology:	Amorphous Silicon
Scintillator:	GOS
Active area:	350 x 430 mm
Pixel pitch:	100 µm
Communication:	WiFi or GbE
Spacial resolution:	4 lp/mm
AD/conversion:	16 bits
Image frequency:	1 fps
Energy:	40kV-370kV
Power supply:	Rechargeable battery
Protection:	IP65
Weight:	4,2 kg

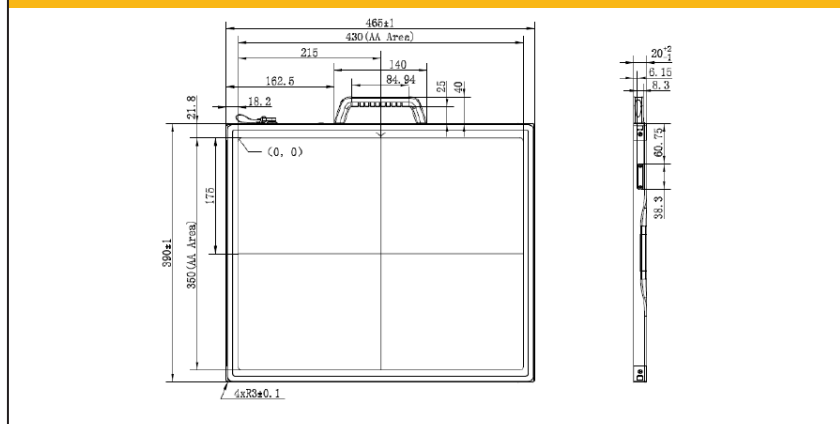
CHARACTERISTICS

- Delivered with Balteau NDT Acquisition software for image acquisition
- Pelican case available for transport
- Rechargeable battery with 5 hours autonomy
- Available in GOS
- Aluminium frame with Carbon-fiber window
- Standard shielding of 370 kV
- IPS012 Image Processing Software available as an option

KEY ADVANTAGES

- Image quality of 100 µm
- Up to 5 hours of battery in operation
- Automatic Exposure Detection
- IP65 protection
- Temperature stability
- Wi-Fi & Gigabit Ethernet (GbE)
- Robust & lightweight design
- Ergonomic & removable handle that can be placed of both sides of the panel

MECHANICAL DRAWING



The Mobli-X 23-100-S is a portable flat panel detector. Thanks to its battery and Wi-Fi interface, a digital inspection can now be done anywhere. Moreover the Mobli-X 23-100-S is very light, robust and ergonomic which makes it easy to be used in harsh environment and conditions.

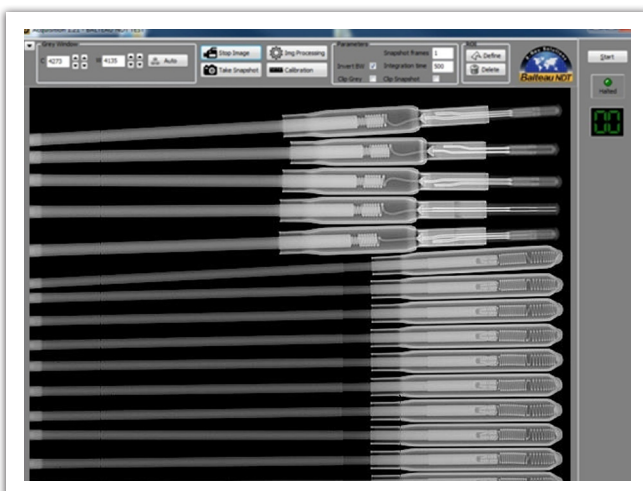


Flat panels are a combination of electronics and silicon, providing direct conversion support to display radiographic images instead of using the traditional film technique. This helps to reduce the exposure time but also gives an extended range of thicknesses using the same energy range.

The Mobli-X 23-100-S is an X-ray detector with a 16-bit conversion for 100 µm. The acquisition software of the Inspection Suite comes with the equipment providing a user-friendly interface for the acquisition of images. The optional Image Processing Software (IPS012) makes it a complete solution.

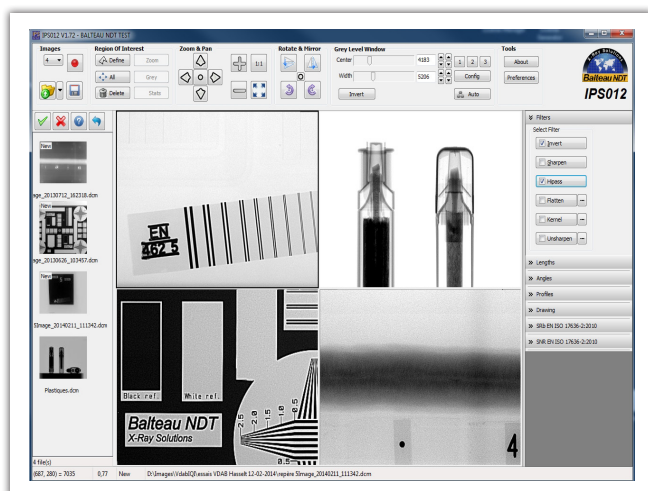


Specifications	Units	MOBI-X 23-100-S
Dimensions:	mm	465 X 390 X 20
Weight:	kg	4,2
Detector Technology:		Amorphous Silicon
Scintillator:		GOS
Spatial resolution:	lp/mm	4,00
Pixel matrix:	Pixels	3500 X 4300
A/D Conversion:	bits	16
Active area:	mm	350 X 430
Pixel pitch:	µm	100
Image frequency:	fps	1 fps
Interface:		GigE or WIFI
WiFi:		IEEE802.11n/ac (2.4GHz, 5GHz)
Image transfer time:		WiFi: 3000ms / GbE: 1500ms
Protection:		IP65
Power supply:		Rechargeable battery



ACQUISITION SOFTWARE

- Included with the panel standard package
- Grey level window
- ROI (region of interest)



IPS012 (Image Processing Software)

- Sold separately
- Linked to Acquisition for an easy image transfer
- A lot of features

Contact details

Balteu NDT

Rue Voie de Liège, 12
B-4681 Hermalle Sous Argenteau
Belgium

www.balteu.com

balteu@balteu.com

Tel. +32 (0) 4 374 75 75

Fax +32 (0) 4 374 75 85

Distributed by:

