

## BALTOSCOPE MOBIX 16-100



Receptor type:	<b>Amorphous silicon</b>
Conversion:	<b>CsI or Gadox</b>
Active area:	<b>From 298 x 248 mm</b>
Pixel pitch:	<b>100 µm</b>
Communication:	<b>WiFi or GbE</b>
Spatial resolution:	<b>5,0 lp/mm</b>
AD/conversion:	<b>16 bits</b>
Image frequency:	<b>9 fps @ 200 µm</b>
Temperature:	<b>10 to 35° operating</b>
Power supply:	<b>Rechargeable battery</b>
On board memory:	<b>1 GB DDR3</b>
Weight:	<b>From 2,5kg</b>

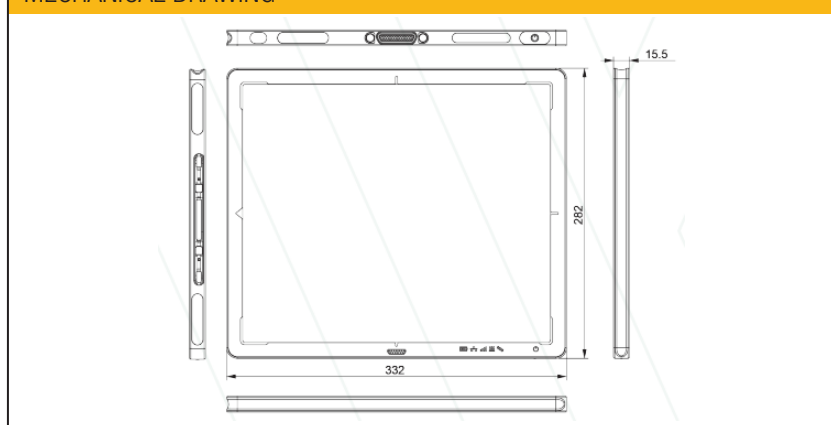
### CHARACTERISTICS

- Delivered with Balteau NDT Acquisition software for image acquisition
- Pelican case available for transport
- Rechargeable battery
- Available in CsI or Gadox conversion depending on the model
- Aluminium frame with Carbon-fiber window
- IP54
- IPS012 Image Processing Software available as an option

### KEY ADVANTAGES

- 2 versions/dimensions available of Mob-X
- From 25 x 30 cm to 35 x 43 cm images
- High resolution 100 µm pixel pitch
- Automatic Exposure Detection
- Wi-Fi & Gigabit Ethernet (GbE) interface
- Docking connector or GbE, power & sync
- On-board pixel corrections & storage
- Dynamic mode
- Fast preview image
- Robust & lightweight design

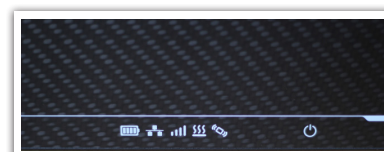
### MECHANICAL DRAWING



*The MOBIX 16-100 is a portable flat panel detector. Thanks to its battery and Wi-Fi interface, a digital inspection can now be done anywhere. Moreover the MOBIX 16-100 is very light, robust and ergonomic which makes it easy to be used in harsh environment and conditions. Equipped with an internal memory, the MOBIX 16-100 can store images in order to allow the operator to unload them later.*



*The MOBIX 16-100 is an X-ray detector with a 16-bit conversion for 100 µm² available in 2 different sizes. The acquisition software of the Inspection Suite comes with the equipment providing a user-friendly interface for the acquisition of images. The optional Image Processing Software (IPS012) makes it a complete solution.*

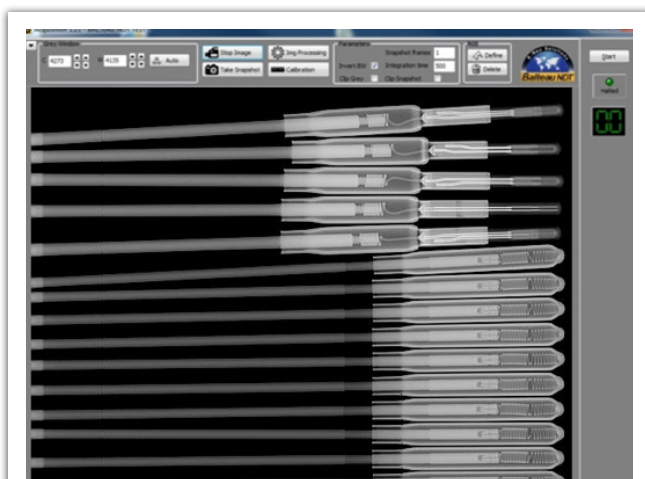


*Flat panels are a combination of electronics and silicon, providing direct conversion support to display radiographic images instead of using the traditional film technique. This helps to reduce the exposure time but also gives an extended range of thicknesses using the same energy range.*



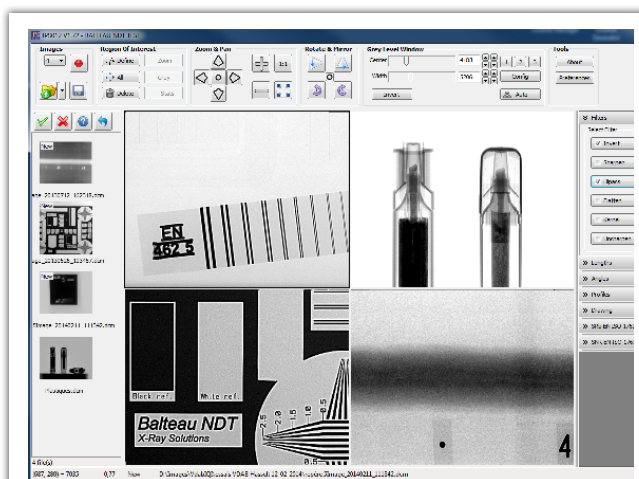
<b>Specifications</b>	<b>Units</b>	<b>MOBIX 16-100</b>
Dimensions:	mm	282 (L) x 332 (l) x 15,5 (h)
Weight:	kg	2,5
Housing:		Al frame/Carbon fiber window
Receptor type:		Amorphous silicon
Conversion screen:		Csl or Gadox
Pixel matrix:		3008 x 2512
A/D Conversion:	bits	16
Active area:	mm	298 x 248
Pixel pitch:	µm	100
Image frequency:	fps	9 fps at 200µm resolution
Interface:		WiFi or GbE
WiFi:		802.11n WiFi Std @ 5 GHz
Image transfer time:		WiFi: 2000ms / GbE: 300ms
On board memory:		1GB DDR3, 8GB SDHC Card
Power supply:		Rechargeable battery 11,1V* & external power

\*(Delivered with charger 110 - 240 V)



## ACQUISITION SOFTWARE

- Included with the panel standard package
- Grey level histogram & ROI
- Compatible with most detectors



## IPS012 (Image Processing Software)

- Includes all common analyzing tools
- Compliant with major standards
- User friendly

## Contact details

### Balteau NDT

Rue Voie de Liège, 12  
B-4681 Hermalle Sous Argenteau  
Belgium

www.balteau.com  
balteau@balteau.com  
Tel. +32 (0) 4 374 75 75  
Fax +32 (0) 4 374 75 85

## Distributed by: