

BALTOSCOPE MOBIX 12-75



Receptor type:	IGZO TFT
Conversion:	CsI or Gadox
Active area:	172,8 x 230,4 mm
Pixel pitch:	75 µm
Communication:	WiFi or GbE
Spatial resolution:	6,66 lp/mm
AD/conversion:	16 bits
Image frequency:	1 fps
Energy:	Up to 450 kV
Power supply:	Rechargeable battery
Protection:	IP67
Weight:	2,4 kg

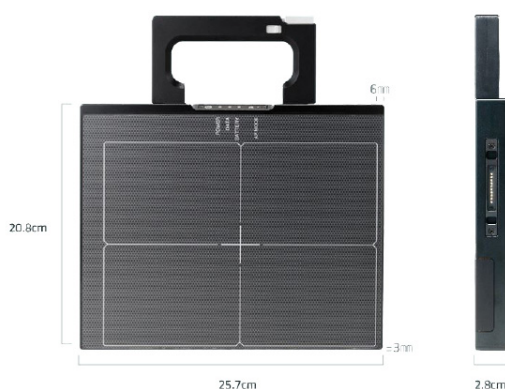
CHARACTERISTICS

- Delivered with Balteau NDT Acquisition software for image acquisition
- Pelican case available for transport
- Rechargeable battery with 8h autonomy
- Available in CsI or Gadox conversion depending on the model
- Aluminium frame with Carbon-fiber window
- Standard shielding of 450 kV
- IPS012 Image Processing Software available as an option

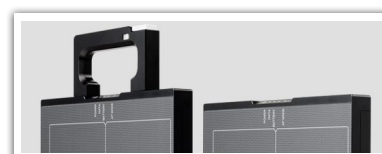
KEY ADVANTAGES

- Image quality of 75 µm
- Up to 8 hours of battery in operation
- Automatic Exposure Detection
- IP67 protection
- Temperature stability
- Wi-Fi & Gigabit Ethernet (GbE)
- Robust & lightweight design
- Ergonomic & removable handle that can be placed of both sides of the panel

MECHANICAL DRAWING



The MobiX 12-75 is a portable flat panel detector. Thanks to its battery and Wi-Fi interface, a digital inspection can now be done anywhere. Moreover the MobiX 12-75 is very light, robust and ergonomic which makes it easy to be used in harsh environment and conditions.

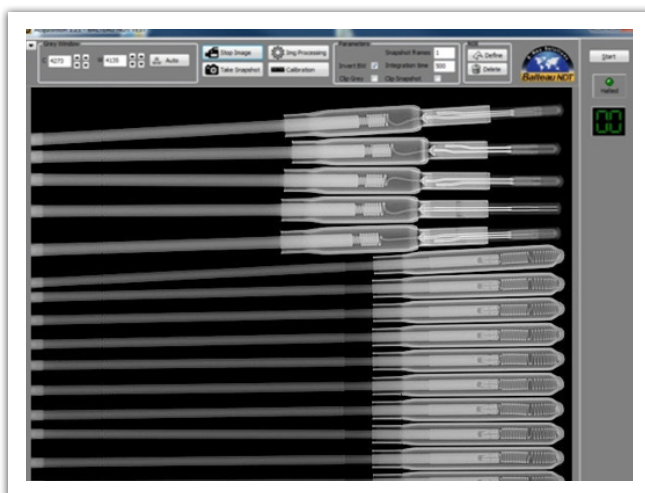


Flat panels are a combination of electronics and silicon, providing direct conversion support to display radiographic images instead of using the traditional film technique. This helps to reduce the exposure time but also gives an extended range of thicknesses using the same energy range.

The MobiX 12-75 is an X-ray detector with a 16-bit conversion for 75 µm. The acquisition software of the Inspection Suite comes with the equipment providing a user-friendly interface for the acquisition of images. The optional Image Processing Software (IPS012) makes it a complete solution.

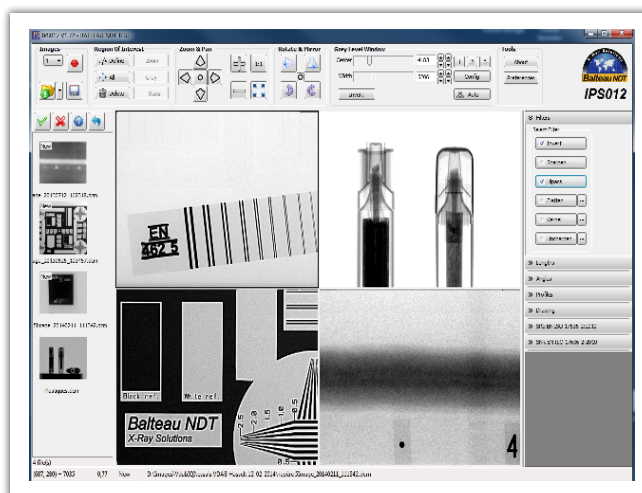


Specifications	Units	MOBIX 12-75
Dimensions:	mm	208,2 x 256,5 x 27,5
Weight:	kg	2,4
Receptor type:		TFT with photodiode
Conversion screen:		Csl or Gadox
Spacial resolution:	lp/mm	6,66
Pixel matrix:	Pixels	2304 x 3072
A/D Conversion:	bits	16
Active area:	mm	172,8 x 230,4
Pixel pitch:	µm	75
Image frequency:	fps	1 fps
Interface:		WiFi or GbE
WiFi:		IEEE802.11n/ac (2.4GHz, 5GHz)
Image transfer time:		WiFi: 3000ms / GbE: 1500ms
Protection:	°C	IP67
Power supply:		Rechargeable battery



ACQUISITION SOFTWARE

- Included with the panel standard package
- Grey level histogram & ROI
- Compatible with most detectors



IPS012 (Image Processing Software)

- Includes all common analyzing tools
- Compliant with major standards
- User friendly

Contact details

Balteau NDT

Rue Voie de Liège, 12
B-4681 Hermalle Sous Argenteau
Belgium

www.balteau.com
balteau@balteau.com
Tel. +32 (0) 4 374 75 75
Fax +32 (0) 4 374 75 85

Distributed by: