

**BALTOSCOPE MOBIX 16-125S**



Detector Technology:	<b>Amorphous Silicon</b>
Scintillator:	<b>CsI/DRZ-Plus</b>
Active area:	<b>250 x 300 mm</b>
Pixel pitch:	<b>125 µm</b>
Communication:	<b>WiFi or GbE</b>
Spacial resolution:	<b>4 lp/mm</b>
AD/conversion:	<b>16 bits</b>
Image frequency:	<b>1 fps</b>
Energy:	<b>40kV-370kV</b>
Power supply:	<b>Rechargeable battery</b>
Protection:	<b>IP54</b>
Weight:	<b>2,3 kg</b>

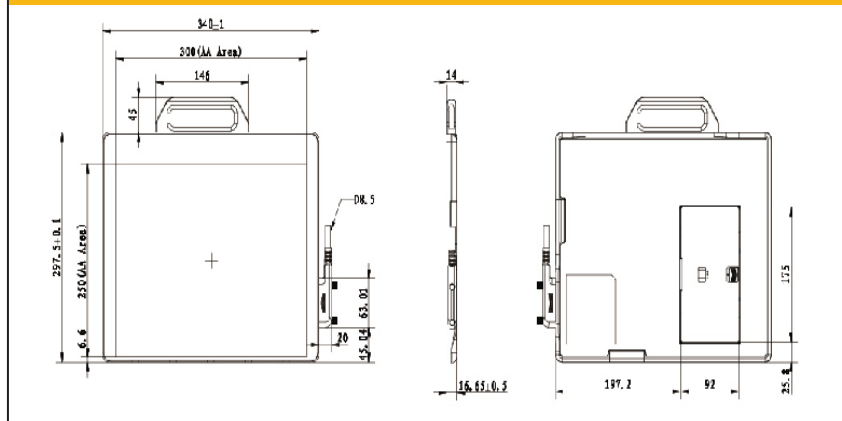
**CHARACTERISTICS**

- Delivered with Balteau NDT Acquisition software for image acquisition
- Pelican case available for transport
- Rechargeable battery with 2.5 hours autonomy
- Available in CsI/DRZ-Plus
- Aluminium frame with Carbon-fiber window
- Standard shielding of 370 kV
- IPS012 Image Processing Software available as an option

**KEY ADVANTAGES**

- Image quality of 125 µm
- Up to 2.5 hours of battery in operation
- Automatic Exposure Detection
- IP54 protection
- Temperature stability
- Wi-Fi & Gigabit Ethernet (GbE)
- Robust & lightweight design
- Ergonomic & removable handle that can be placed of both sides of the panel

**MECHANICAL DRAWING**



*The MobiX 16-125S is a portable flat panel detector. Thanks to its battery and Wi-Fi interface, a digital inspection can now be done anywhere. Moreover the MobiX 16-125S is very light, robust and ergonomic which makes it easy to be used in harsh environment and conditions.*



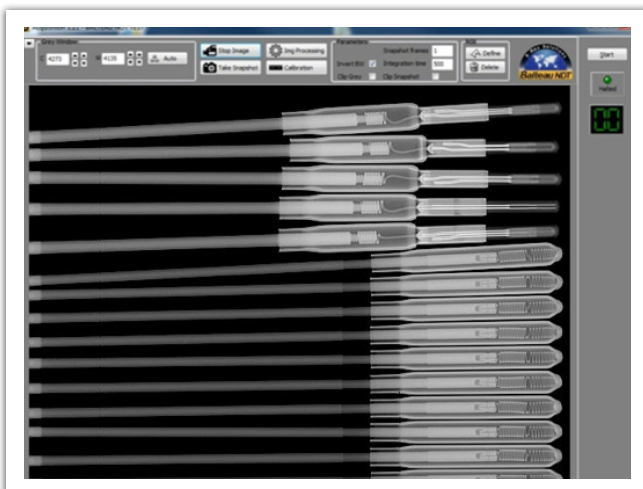
*Flat panels are a combination of electronics and silicon, providing direct conversion support to display radiographic images instead of using the traditional film technique. This helps to reduce the exposure time but also gives an extended range of thicknesses using the same energy range.*



*The MobiX 16-125S is an X-ray detector with a 16-bit conversion for 125 µm. The acquisition software of the Inspection Suite comes with the equipment providing a user-friendly interface for the acquisition of images. The optional Image Processing Software (IPS012) makes it a complete solution.*

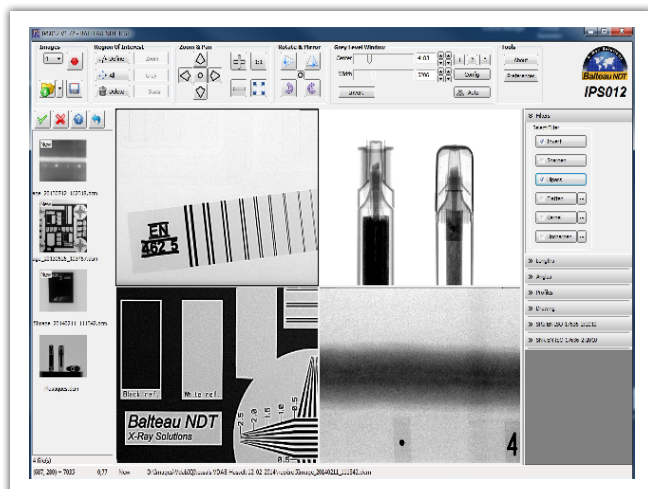


Specifications	Units	MOBIX 16-125S
Dimensions:	mm	340 x 291 x 18
Weight:	kg	2,3
Detector Technology:		Amorphous Silicon
Scintillator:		CsI/DRZ-Plus
Spatial resolution:	lp/mm	4,00
Pixel matrix:	Pixels	2000 x 2400
A/D Conversion:	bits	16
Active area:	mm	250 x 300
Pixel pitch:	µm	125
Image frequency:	fps	1 fps
Interface:		GigE or WIFI
WiFi:		IEEE802.11n/ac (2.4GHz, 5GHz)
Data interface:		Wired: GigE (≥ 100Mbps)    Wireless: 802.11 a/g/n (≥ 100Mbps)
Protection:		IP54
Power supply:		Rechargeable battery



### ACQUISITION SOFTWARE

- Included with the panel standard package
- Grey level histogram & ROI
- Compatible with most detectors



### IPS012 (Image Processing Software)

- Includes all common analyzing tools
- Compliant with major standards
- User friendly

### Contact details

#### Balteau NDT

Rue Voie de Liège, 12  
B-4681 Hermalle Sous Argenteau  
Belgium

www.balteau.com

balteau@balteau.com

Tel. +32 (0) 4 374 75 75

Fax +32 (0) 4 374 75 85

### Distributed by:

