

BALTOSCOPE MOBIX 23-100S



Receptor type:	Amorphous silicon
Conversion:	DRZ-Plus
Active area:	350 x 430 mm
Pixel pitch:	100 µm
Communication:	WiFi or GbE
Spatial resolution:	5 lp/mm
AD/conversion:	16 bits
Image frequency:	/ fps
Energy:	40 kV-370 kV
Power supply:	Rechargeable battery
Protection:	IP65
Weight:	4,2kg

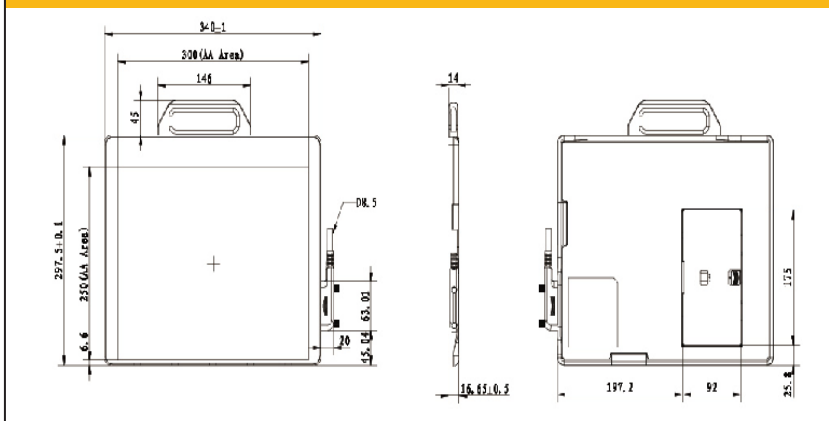
CHARACTERISTICS

- Delivered with Balteau NDT Acquisition software for image acquisition
- Pelican case available for transport
- Rechargeable battery with 6 hours autonomy
- Available in Csl
- Aluminium frame with Carbon-fiber window
- Standard shielding of 370 kV
- IPS012 Image Processing Software available as an option

KEY ADVANTAGES

- Image quality of 100 µm
- Up to 6 hours of battery in operation
- IP65 protection
- Automatic Exposure Detection
- Wi-Fi & Gigabit Ethernet (GbE) interface
- Temperature stability
- Robust and lightweight design

MECHANICAL DRAWING



The MOBIX 23-100S is a portable flat panel detector. Thanks to its battery and Wi-Fi interface, a digital inspection can now be done anywhere. Moreover the MOBIX 23-100S is very light, robust and ergonomic which makes it easy to be used in harsh environment and conditions.



Flat panels are a combination of electronics and silicon, providing direct conversion support to display radiographic images instead of using the traditional film technique. This helps to reduce the exposure time but also gives an extended range of thicknesses using the same energy range.

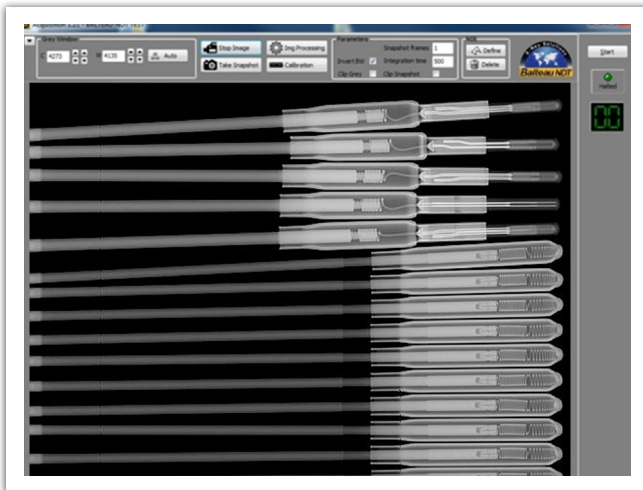


The MOBIX 23-100S is an X-ray detector with a 16-bit conversion for 100 µm. The acquisition software of the Inspection Suite comes with the equipment providing a user-friendly interface for the acquisition of images. The optional Image Processing Software (IPS012) makes it a complete solution.



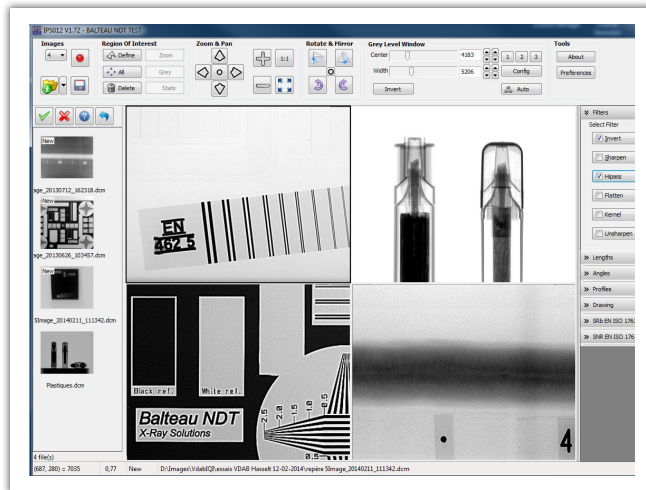
Specifications	Units	MOBIX 23-100S
Dimensions:	mm	465 (L) x 291 (l) x 18 (h)
Weight:	kg	4,2
Housing:		Carbon fiber front & back
Receptor type:		Amorphous silicon
Conversion screen:		DRZ-Plus
Pixel matrix:		4288 x 3524
A/D Conversion:	bits	16
Active area:	mm	350 x 430
Pixel pitch:	μm	100
Image frequency:	fps	/ fps
Interface:		GigE or WiFi
WiFi:		IEEE802.11n/ac (2.4GHz, 5GHz)-802.11 alg/n (>100mps)
Image transfer time:		WiFi: 3000ms / GbE: 1500ms
Protection:		IP65
Power supply:		Rechargeable battery

*(Delivered with charger 110 - 240 V)



ACQUISITION SOFTWARE

- Included with the panel standard package
- Grey level histogram & ROI
- Compatible with most detectors



IPS012 (Image Processing Software)

- Includes all common analyzing tools
- Compliant with major standards
- User friendly

Contact details

Balteau NDT

Rue Voie de Liège, 12
B-4681 Hermalle Sous Argenteau
Belgium

www.balteau.com
balteau@balteau.com
Tel. +32 (0) 4 374 75 75
Fax +32 (0) 4 374 75 85

Distributed by: